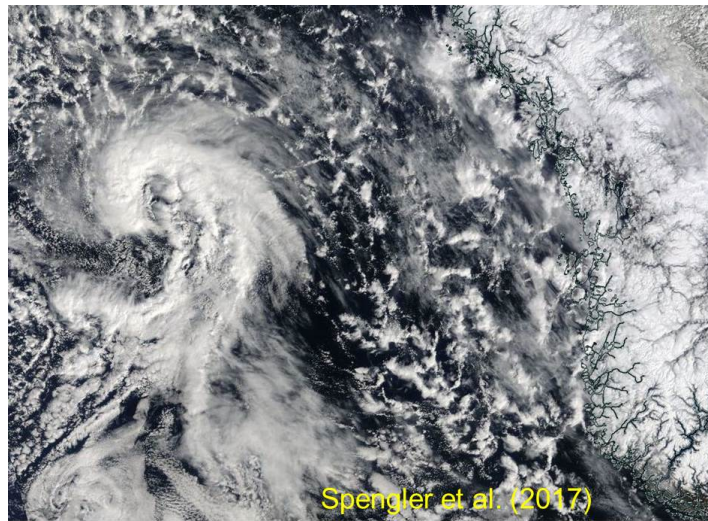


**14<sup>th</sup> European Polar Low Working Group meeting**  
**Workshop on ‘Polar lows and mesoscale weather extremes’**  
**5-6 April 2018, Trier, Germany**



The workshop focuses on polar lows and mesocyclones as well as mesoscale weather extremes in both hemispheres. This includes e.g. mesoscale weather phenomena such as katabatic winds, tip jets, boundary layer fronts, cold air outbreaks in polar regions. Contributions of experimental, climatological, theoretical, modelling, and remote sensing studies are welcome.

The workshop is organized by the European Polar Lows Working Group (EPLWG) and is also part of the activities of the IASC (International Arctic Science Committee) Atmosphere working group. The 14<sup>th</sup> European Polar Low Workshop will be hosted by the University of Trier, Germany. Trier is a very attractive city (oldest town of Germany and former capital of the Romans).

Similar to previous workshops, we aim to bring together scientists and forecasters to present their latest work and recent findings on polar lows and related research. The idea is to share new knowledge and to encourage discussions on improving forecasting and understanding of polar lows and phenomena outlined above. The workshop will not have a registration fee! A limited number of early career scientists can receive travel support.

**Authors are invited to submit abstracts in all the above-mentioned areas by 31 December 2017. They should be submitted electronically by mail to [willmes@uni-trier.de](mailto:willmes@uni-trier.de) (with [heinemann@uni-trier.de](mailto:heinemann@uni-trier.de) in cc). If you want to apply for early career scientist's travel support, please mention this with your abstract submission.**

We hope to see you in Trier in April 2018!

**Scientific organisation team**

Guenther Heinemann, Environmental Meteorology, University of Trier, Germany, email: [heinemann@uni-trier.de](mailto:heinemann@uni-trier.de)

Chantal Claud, Laboratoire de la Meteorologie Dynamique/Institut Pierre-Simon Laplace, Ecole Polytechnique, Palaiseau, France, email: [chclaud@lmd.polytechnique.fr](mailto:chclaud@lmd.polytechnique.fr)

Thomas Spengler, Geophysical Institute, University of Bergen, Norway, email: [thomas.spengler@gfi.uib.no](mailto:thomas.spengler@gfi.uib.no)

Sascha Willmes, Environmental Meteorology, University of Trier, Germany, email: [willmes@uni-trier.de](mailto:willmes@uni-trier.de)