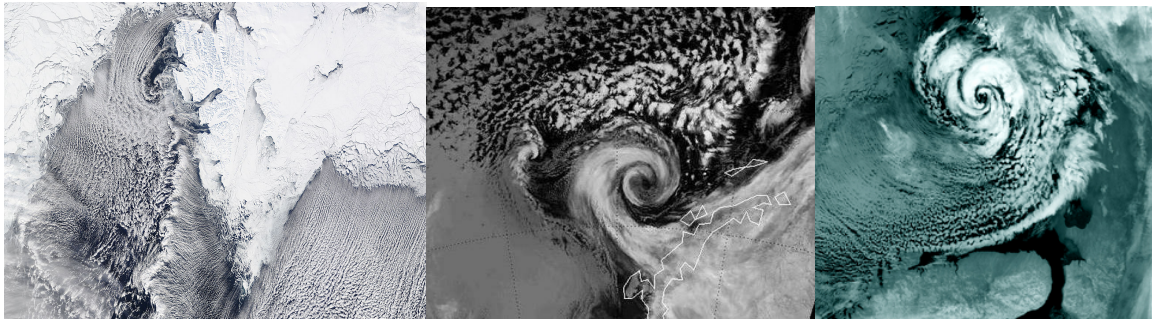


13th European Polar Low Working Group meeting

25-26 April 2016, Paris, France

First Circular



The European Polar Lows Working Group (EPLWG) focuses on polar mesocyclones in both hemispheres, but contributions to other mesoscale weather phenomena such as katabatic winds, tip jets, boundary layer fronts, cold air outbreaks, and weather extremes in polar regions are also welcome. This includes experimental, climatological, theoretical, modelling, and remote sensing studies.

The 13th European Polar Low Workshop will be hosted by the Laboratoire de Météorologie Dynamique (LMD), Paris, France. Similar to previous workshops, we aim to bring together scientists and forecasters to present their latest work and recent findings on polar lows and related research. The idea is to share new knowledge and to encourage discussions on improving forecasting and understanding of polar lows and phenomena outlined above. The workshop will not have a registration fee!

A second circular will be distributed by the end of year with the pertinent details for abstract submission.

We hope to see you in Paris in April 2016!

Scientific organisation team

Chantal Claud, chclaud@lmd.polytechnique.fr

Thomas Spengler, Thomas.Spengler@uib.no

Guenther Heinemann, heinemann@uni-trier.de