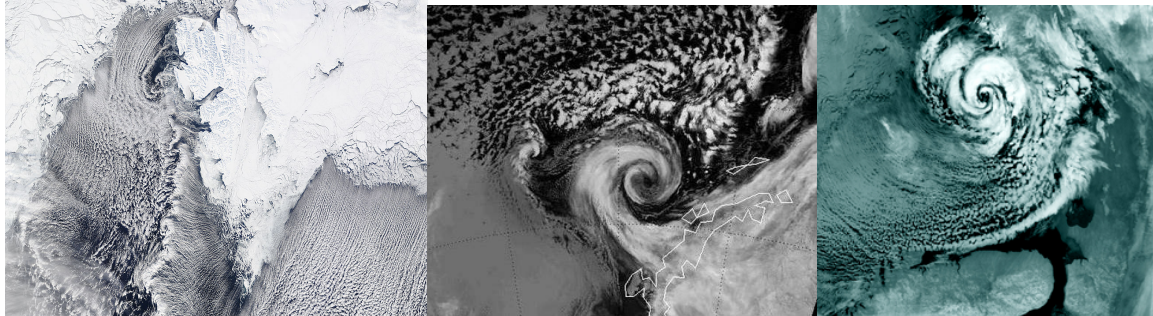


# 13<sup>th</sup> European Polar Low Working Group meeting

25-26 April 2016, Paris, France

## Second Circular & Call for abstracts



The European Polar Lows Working Group (EPLWG) focuses on polar mesocyclones in both hemispheres, but contributions to other mesoscale weather phenomena such as katabatic winds, tip jets, boundary layer fronts, cold air outbreaks, and weather extremes in polar regions are also welcome. This includes experimental, climatological, theoretical, modelling, and remote sensing studies.

The 13<sup>th</sup> European Polar Low Workshop will be hosted by the Laboratoire de Météorologie Dynamique (LMD), Paris, France. Similar to previous workshops, we aim to bring together scientists and forecasters to present their latest work and recent findings on polar lows and related research. The idea is to share new knowledge and to encourage discussions on improving forecasting and understanding of polar lows and phenomena outlined above. The workshop will not have a registration fee!

**Participants are invited to submit abstracts in all the above-mentioned areas by 18 December 2015. Abstracts must be submitted electronically by mail to:**

[chclaud@lmd.polytechnique.fr](mailto:chclaud@lmd.polytechnique.fr)

We hope to see you in Paris in April 2016!

### Scientific organisation team

Chantal Claud, [chclaud@lmd.polytechnique.fr](mailto:chclaud@lmd.polytechnique.fr)

Thomas Spengler, [Thomas.Spengler@uib.no](mailto:Thomas.Spengler@uib.no)

Guenther Heinemann, [heinemann@uni-trier.de](mailto:heinemann@uni-trier.de)