



Welcome to Trier University

Orientation for International Exchange Students



Welcome to Trier University



TABLE OF CONTENTS

	Preface	3
	Trier University - Studying in an international environment	4
1.	Off to Trier! - Before departure	6
1.1	Application process for exchange students	7
1.2	Entry and visa requirements	12
1.3	Health Insurance	13
1.4	Funding: Which expenses do I need to expect?	14
1.5	Important documents: What to bring?	15
2.	Welcome to Trier - Arrival	16
2.1	Travelling to Trier	17
2.2	Arriving in Trier	19
2.3	Overnight accomodation at short notice	21
3.	Your first weeks in Trier - After Arrival	23
3.1	Orientation programme	24
3.2	Student ID Card - The TUNIKA	26
4.	Studying at Trier University	28
4.1	Trier University	29
4.2	The academic year	33
4.3	Faculties and Departments	35
4.4	Courses	38
4.5	German as a Foreign language Courses	49
4.6	Extra-curricular student activities	50
5.	Living in Trier	54
5.1	The city of Trier	55
5.2	Leisure time	57
5.3	Important addresses and telephone numbers	59
6.	Glossary - Important terms in German	61
7.	Important dates	63

Preface

Dear exchange students,

The city of Trier and Trier University are delighted that you have chosen to study in Trier for your exchange programme and we look forward to welcoming you to one of the most beautiful regions of Germany.

In order to make preparation for your stay easier, the International Office has put together this brochure for you, which contains some essential information about studying in Trier.

If you have any further questions, please feel free to contact the appropriate member of staff at the International Office. We will be happy to help you.

We wish you a safe journey to Trier and a rewarding experience during your stay, both personally and academically.

Your International Office Team, Trier University

Your contact at the International Office (IO):

Incoming Students Coordinators

Ms. Janina Kroener, M.A, Ms. Leonie Wittke, B.A.

exchangestud@uni-trier.de

Tel.: +49 651 201-4676/ -2808

Postal Address:

Universität Trier
International Office
54296 Trier
Germany

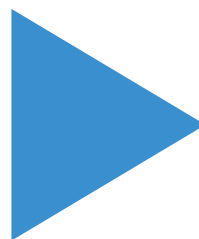
Visitor Address:

Campus I
Universität Trier
Building V
Room V 20 B

Trier University: Studying in an international environment



**Around
11.000
students in
6 faculties**



13% International
students from over
100 countries

230
partner
universities
worldwide



International Student Groups

Take an active part in one of the many international student groups at Trier University!

Member of the “University of the Greater Region”

Study at Trier University and benefit from the offers of the Universities of Saarland, Luxembourg, Lüttich and Kaiserslautern as well!



Before departure



1 Before Departure

1.1 Application process for exchange students

Online Application Procedure

Students are required to apply online through the online application portal. The application process begins:

- ▶ in April/early May for the following winter semester
- ▶ in November for the following summer semester

Current information regarding applications can be found [here](#).

The application forms

The following three application forms are available through the online application portal/website from the beginning of the application process:

1. The application form for exchange students

You may only study at Trier University once you have been officially admitted to pursue a course of study. In order for **Trier University's Admissions Office** to be able to issue an admission letter, you must first apply online. After submitting your application online, you must send it by email to the IO once it has been signed by yourself and your programme coordinator at your home university.

A signed copy of your application must reach us by 1 June for the following winter semester and 15 December for the following summer semester.



Your application form is only valid if your home university has confirmed your nomination by signing and stamping your application form.



2. Orientation programme

Each semester, in the one-and-a-half weeks before the start of the lecture period, the IO organizes a **free orientation programme**.

It offers a variety of events which help international students get to know the university and make settling to life in Trier easier.

Participation in the orientation programme is mandatory, you therefore do not need to apply for it.

Information about the content and set-up of the orientation programme can be found in section "3. Your first weeks in Trier - After Arrival".

1 Before Departure

3. The application form for allocation of accommodation through the IO

For students arriving from abroad shortly before the start of the lecture period, it might not be easy to find a room on the housing market.

The IO has therefore a limited number of rooms available for international students in the student halls of residence, which are owned by Trier Student Services. The monthly room rent currently ranges from 360 to 420 Euros. In addition, a deposit of 600 Euros needs to be paid as well per room.

We can only offer you a room in the halls of residence if you complete and send us the **"accommodation application"** form together with your **"application for admission to study"** form. Rooms are offered on a first-come first-served basis!

The deposit will be returned at the end of tenancy provided the room is left in an appropriate state according to the terms of the contract.



Student residence "Kleeburger Weg" of the "Studierendenwerk Trier"



Student residence "Tarforst" of the "Studierendenwerk Trier"



Exchange students can be provided with a room in the student residences of the "Studierendenwerk Trier" solely through the IO. Applications made directly to Trier Student Services will be unsuccessful and are, therefore, pointless!



1 Before Departure

The allocation of rooms in the halls of residence takes place in June for the following winter semester, and in January for the following summer semester. The date of receipt of your accommodation application is decisive for the allocation of rooms.

This means, the earlier you send your application, the better chance you have of getting a room in one of the halls of residence. All students to whom the IO is able to offer accommodation in a student residence will receive an email containing all the relevant information about their room.

If the IO cannot offer you a room due to an exhausted room quota, you will also be informed by email. Although we cannot offer you accommodation, we will provide you with information about alternative accommodation options in Trier, but you are ultimately responsible for searching for somewhere to live yourself.

Exchange students who wish to rent privately (for example, in order to share with German students) are also responsible for finding a room themselves. The IO does not provide any private accommodation!



More information regarding visa regulations:

► [Website of the Federal Foreign Office \(Auswärtiges Amt\)](#)

- > Visa & Service
- > Visa information
- > Visa regulations



1.2 Entry and visa requirements

Depending on your citizenship, you may require a visa to enter the Federal Republic of Germany (Bundesrepublik Deutschland - BRD). Please consult a German diplomatic agency or consular post in your home country on entry and residence regulations. Please start the procedure as early as possible!



► [Information on entering Germany and Visa](#)

► [Websites of German Embassies](#)

International students and applicants who are citizens of any of the following countries do not require a visa to enter Germany: European Union member states, Iceland, Norway, Switzerland, Australia, Brazil, Israel, Japan, Canada, South Korea, New Zealand and the USA. They may still need to apply for a residence permit, once in Germany.

Applicants from other countries: Please check the visa regulations at:

► www.auswaertiges-amt.de/en

Please note that a tourist visa does not entitle you to study in Germany and a tourist visa cannot be converted into a study visa after entering the country!

1 Before Departure

1.3 Health insurance

For your study abroad stay at Trier University you must have sufficient health insurance coverage to be eligible for enrolment. Please make sure which one of the following options A-D applies to you.

- A** If - for whatever reasons - you have German statutory health insurance valid for the whole duration of your stay: perfect!
- B** If you have a valid (valid until the end of your stay in Trier!!!) European Health Insurance Card (EHIC or GHIC): perfect!
- C** If you have health insurance coverage via a social security agreement between your home country and Germany (usually only students from Turkey and Serbia): ok!
- D** However, if you do not have health insurance coverage according to the first three groups then please absolutely pay attention to what follows:

*Private or statutory health insurance from your home country will **not** be approved. You will have to purchase a German health insurance plan before arriving in Trier! See information on website.*



Please find detailed information on your health insurance options on the website!

1.4 Funding: Which expenses do I need to expect?

For your stay in Trier you should budget at least 992 Euros per month. At the beginning of your stay, you will also have to allow for a few one-off expenses. On top of this is as well approx. 376 Euros in **social fees***, which are to be paid when enrolling. The highest expenses are due to rent, health insurance and cost of food. The following table lists the different expenses you may expect to have each month:

Items	Expenses per Month
Rent for your apartment	ca. 360 - 320 Euro
Health insurance	ca. 100 - 130 Euro
Cost of food	ca. 300 – 400 Euro
Material for studies (books, etc.)	ca. 50 Euro
Miscellaneous (clothing, leisure, etc.)	ca. 50 - 100 Euro

Please ensure you are fully able to finance your studies for the entire length of your stay before departing for Trier and that you bring some cash money to Germany for the first weeks of your stay!



[More information on funding](#)



[Proof of financial resources and blocked account](#)

***The social fee** is not a tuition fee! They are a contribution towards Trier Student Services and the student union ("AStA") and also cover the cost of your bus pass for the semester.

1.5 Important Documents - What to bring?

Important: At the beginning of your stay in Trier, usually during the orientation programme, you will need to complete various administrative formalities for different civil authority offices. Please bring the following documents with you, so that you - with help of the IO - can do this quickly and easily:

- ▶ 1 copies of your passport or personal identity card
- ▶ 1 biometric passport photo (to be taken once in Germany)
- ▶ 1 certificate of your healthcare cover in case you have German statutory health insurance or a valid European Health Insurance Card. If not please see 1.3 for the procedure to follow
- ▶ Should you need a visa to enter Germany: 1 copy of your visa
- ▶ If you do not come from a European Union member state and are not receiving a scholarship from Trier University, DAAD or the Fulbright commission: 1 statement of your financial means in German or English. This could be: proof of a blocked account, proof of a scholarship, proof of a regular German bank account. Needed amount per month: 992.00 Euros. **The statements needs to cover the amount for the entire duration of your stay.**
- ▶ Your admission letter from Trier University

Please send a digital copy of your passport and visa to exchangestud@uni-trier.de

Arrival



2.1 Travelling to Trier

Travelling by plane and train

There are different options of reaching Trier. For example, there are several airports in the vicinity of Trier:

- ✈ Frankfurt (Main) (approx. 3h 30min to Trier)
- ✈ Luxemburg (approx. 1h 30min to Trier)
- ✈ Köln/Bonn (approx. 3h 30min to Trier)

We recommend those three airports if you arrive from North or South America, Asia, Oceania, or Africa. For shorter distance, e.g. from a European country, you may also use the smaller airports "Saarbrücken" or "Frankfurt Hahn".

From Luxembourg airport there is a bus connection to Trier main station. From Frankfurt and Cologne-Bonn airport you can travel by train to Trier main station.

More information:

<https://www.uni-trier.de/en/international/coming-to-trier/exchange-students/arrival-to-trier>



There are no direct train connections from the train station Cologne-Bonn airport and Frankfurt/Main airport to Trier main station. You must change at least once, depending on your connection.

Travelling by train

If you arrive from a European country by train, you can also find the train connections on the [Deutsche Bahn homepage](#) or on the homepage of the railway company of your home country.

- ▶ You can book tickets or look up information about e.g. delays via the App "[DB Navigator](#)" from the German Railway (Deutsche Bahn) (recommended!)
- ▶ Important information: Sometimes train routes to Trier from an airport you use to come to Germany are suspended because of construction sites or damages. For more up-to-date informationen click [here](#) (in German).

Travelling by remote bus

Further information: www.flixbus.de

Travelling by car

For students from Belgium, France, the Netherlands, and Luxembourg, making the trip using your own car may be a favourable option. [Here](#) you can find overview maps.

Please plan your route beforehand.

2.2. Arriving in Trier

Arriving in Trier you should normally go directly to your accommodation.

If you are allocated a room in student halls of residence by the IO, you can pick up your keys from that hall's janitor at a pre-arranged time. Afterwards, you need to register with the International Office on campus.

How to get to Trier University

There are many bus routes running between the main station/inner city and Campus I and II of Trier University.

Most important bus routes to Campus I (via Trier Central Station):

Route 3, 13 (available during lecture period), at nighttime: 83/88, 31, 81

Most important bus routes to Campus II (via Trier Central Station):

Route 4, 3, 13 & 14 (available during lecture period), at nighttime: 83, 88

[Here](#) you can find more detailed information on how to get to Trier University:

Information about student halls of residence can be found by going to:

► www.studiwerk.de



The IO will notify you in late June for the winter semester or January for the summer semester whether you have been allocated a room. This email will also explain what you need to do in order to pick up the keys to your room. You will receive your rental contract upon arrival via the IO.

If you have found private accommodation, it is advised that you make clear arrangements with the landlord in the days before travelling to Trier about when and where to pick up your keys. Please make sure that you receive a rental contract.



2.3 Overnight accommodation at short notice

Should you, for various reasons:

- ▶ Still have no accommodation for the length of your study visit in Trier
- ▶ Have accommodation, but it is unavailable on the day of your arrival
- ▶ Have accommodation, but you arrive in Trier on a day (weekends or on bank holidays) or at a time (late afternoon, in the evening or at night) at which your landlord cannot hand over the keys

it is possible you may need accommodation for one or several nights at short notice and at a low cost. Such overnight accommodation is offered e.g. at the following addresses:

Hostels

Kolping Hostel im Warsberger Hof

Dietrichstraße 42
54290 Trier
Tel.: +49 (0) 651/ 975250
www.kolpinghaus-warsberger-hof.de

Jugendherberge Trier

An der Jugendherberge 4
54292 Trier
Tel.: +49 (0) 651/ 146620
www.jugendherberge.de

Hotels

B&B Hotel Trier

Güterstraße 66
54295 Trier
Tel.: +49 (0) 651 97909600
www.hotel-bb.com/de/hotel/trier

Hotel Aulmann

Jakobsspitälchen 1
54290 Trier
Tel.: +49 (0) 651 97670
www.stadthotel.me

Gasthaus Wollscheid

Tarforster Str. 43
54296 Trier-Tarforst
Tel.: +49 (0) 651 10442
www.gasthauswollscheid.de

The following search portals and booking websites offer more accommodation options:

- [Booking.com | Offizielle Seite | Die besten Hotels, Flüge, Mietwagen & Unterkünfte](#)
- [Übernachtungsmöglichkeiten: Günstige Unterkünfte buchen – KAYAK](#)



Your first weeks in Trier

After Arrival

03

3 After Arrival

3.1 Orientation programme

The IO at Trier University offers a one-and-a-half week orientation programme before the start of the semester, which is mandatory for all new international students.

The aim of the programme is to prepare you for studying at the University and to help you settle into living in Trier. The programme is offered on campus.

The orientation programme has three key components:

- Completion of important administrative formalities (City registration, residence permit, bank account opening)
- Various information sessions (Studying in Trier, Information on the dormitories, International Centre)
- Social and cultural programme (City tour, campus tour ect.)

You will receive the full programme schedule on the first day of the course.

3 After Arrival

3.2. Student ID Card - The TUNIKA

After arrival at Trier University, you will receive your Trier student ID card, the "Tunika". You will receive authorization to use the computers at the University, including instructions on how to access the Wi-Fi on campus, your own email address and the PORTA system before arrival.

Enrolment and the TUNIKA are initially only valid for one semester. If you are studying for two semesters at Trier University, you must confirm your second semester near the end of your first. More information on this process will be sent by email towards the end of the first semester. Students who fail to re-register on time will automatically be exmatriculated.



The **TUNIKA** has the following basic functions:

- ▶ You can use it to borrow books from the university library.
- ▶ You can use it to pay in the canteens on both Campus I and Campus II, which offer food at cheap student prices.
- ▶ Washing machines & dryers at the Studiwerk dormitories.



3.3. Ticket for public transportation - PORTAZON-App

For the use of the public transport you need to use the **PORTAZON-App**.

With this ticket you can access busses, trams and regional trains in all of Germany. Information on the installation you will find [here](#).

- ▶ For information of the Deutschlandticket [click here](#).
- ▶ For information on the canteen see: www.studiwerk.de > Mensa
- ▶ For information on the library see: www.uni-trier.de/bibliothek

3 After Arrival

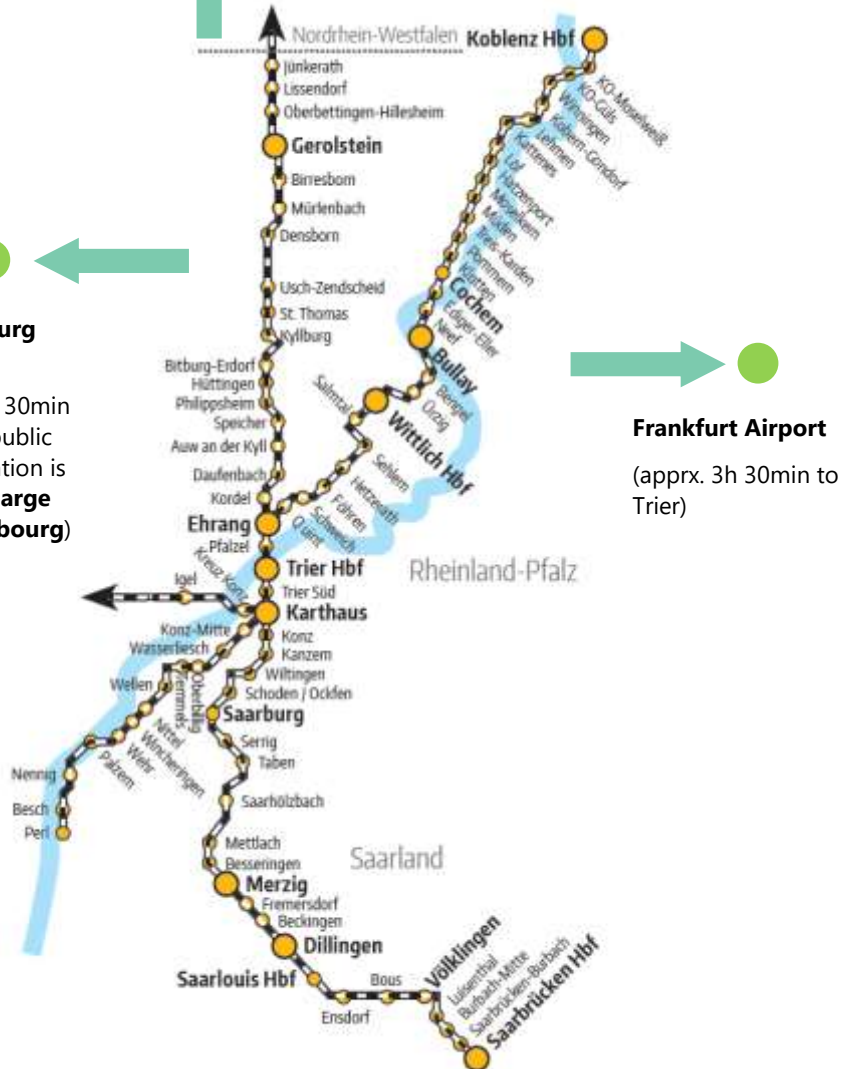
Train connections in the region

Cologne/Bonn Airport

(apprx. 3h 30min to Trier)

Luxembourg Airport

(apprx. 1h 30min to Trier), public transportation is **free of charge in Luxembourg**)



Studying at Trier University



04

4 Studying at Trier University

4.1 Trier University

Trier has a long tradition as a university city. The original University was founded in 1473 before being forced to close in 1798. It was then re-established in 1970. Today, it is home to around 11,000 students, of which 13% are international students.

Geographically, the University looks down from its position on the Tarforst mountainside on the Moselle valley and also the city of Trier.

Connections between the University and city are very regular, with buses running throughout the day (on workdays, every 10 minutes, with the journey taking 15 to 20 minutes) and in the evening.



Trier University is a campus university, meaning that all of its buildings and facilities are concentrated in a relatively small area and are easily accessible by foot. The main campus (Campus I) and Campus II are situated about ten minutes walk from each other and there is also a shuttle bus between the two.

The buildings on Campus I are surrounded by landscaped parkland and lakes, with sport, leisure and shopping facilities all available nearby. Campus II also has its share of greenery and borders onto Trier's science and technology park.

For more information visit us on our social media channels:



[@uni_trier](https://www.instagram.com/uni_trier)



[@Universitt Trier](https://www.facebook.com/UniversittTrier)



[@Uni Trier](https://www.youtube.com/UniTrier)



[@unitrier.bsky.social](https://bsky.app/unitrier.bsky.social)

4 Studying at Trier University

Campus I



Campus II



4.2. The academic year

The academic year is divided into two semesters: the winter semester (WS), which runs from the 1st October to the 31st March and the summer semester (SS), running from the 1st April until the 30th September. The lecture period for the winter semester starts around mid-October and finishes mid-February, lasting about 15 weeks. For the summer semester, the lecture period starts mid-April, finishes mid-July and lasts about 14 weeks.

Exams (both written and oral) for exchange programme students usually take place in the last two weeks of the lecture period. You must agree the exact exam dates with the lecturers for your courses once in Trier.

No courses take place from mid-July until mid-October or from mid-February until mid-April (This time is called "vorlesungsfreie Zeit").



Dates for the winter semester 2025/26

Application deadline: 01.06.2025

Orientation programme: 01.10.2025 - 10.10.2025*

Lecture period: 13.10.2024 - 14.02.2025

Christmas vacation: 22.12.2024 - 07.01.2025

Dates for the summer semester 2026

Application deadline: 15.12.2025

Orientation programme: 30.03..2026 - 10.04.2026*

Lecture period: 13.04.2026 - 17.07.2026

Dates for the winter semester 2026/27

Application deadline: 01.06.2026

Orientation programme: (tbc)*

Lecture period: 12.10.2026 - 13.02.2027

Christmas vacation: 23.12.2026 - 08.01.2027

* for new international students only, mandatory

4 Studying at Trier University

4.3. Faculties and Departments

Trier University is subdivided into six faculties and an additional theological faculty. Each faculty is then assigned a range of departments. Within each department, there are several different study programmes, e.g. Bachelor and Master programmes.

Faculty I:

Education, Philosophy,
Psychology, Nursing Science

Faculty II:

English Studies, German Language and Literature (with German as a Foreign Language), Japanese Studies, Classics (Latin and Greek), Computational Linguistics and Digital Humanities, Media Studies, Phonetics, Romance Studies, Slavonic Studies, Chinese Studies

Faculty III:

Egyptology, History, Classical Archeology, Art History, Papyrology, Political Science

Faculty V:

Law

Faculty IV:

Economics, National Economics, Social Sciences, Mathematics, Computer Sciences

Faculty VI:

Spatial and Environmental Sciences, Geography, Geoscience

Theological Faculty:

Catholic Theology

You can find more information on the individual faculties and departments at

► www.uni-trier.de/studium/studienangebot/studienfaecher



4 Studying at Trier University

The departments of Geography, Geoscience, Computer Sciences and Business Information Systems are based on Campus II, the faculty of Catholic Theology is located in the E-building and downtown Trier. All other departments are found on Campus I.

In your admission letter you will be informed of the departments to which you have been admitted. You may participate in the courses offered by these departments. Yet, if places are available and if you meet the qualifications, you may also have the opportunity to take part in courses on offer in other departments, which are not stated in your admission letter. Please bear in mind, however, that you are not necessarily entitled to attend master's courses if you have only been admitted to the University to study for your bachelor degree.



4.4. Courses

There are three main types of courses offered:

- ▶ **lecture**
- ▶ **seminar**
- ▶ **tutorial**

In a **lecture**, the professor is the key player, presenting and discussing important information about the subject. The students play only a passive role as listeners, though they can, and even should, ask questions during or at the end of the lecture.

In a **seminar**, it is the students who take an active role. In the first session of the seminar, each student selects a topic from a list given by the lecturer (a professor or assistant lecturer). Students are to then research their selected topic from specific viewpoints and present it to the other participants in the seminar at a later date.

A **tutorial** generally deals with the content of the concurrent lectures, going through it more thoroughly. Active participation is expected from the participants. The tutorials are led by a lecturer who is a professor, an assistant lecturer or an advanced student.

For all three types of courses, a session usually lasts 90 minutes and takes place once a week. This counts as two weekly credit hours. There are, however, courses, which are comprised of four or more hours and take place several times a week.

4 Studying at Trier University

Choice of courses

The course system at Trier University is based on modules in the individual subjects. These modules are basically offered annually and unchanged. As an international student you are allowed to select individual courses of modules. However, it is important to know that courses within the modules change again and again. For this reason, course plans from the past are NOT transferable, as courses at Trier University change every semester.

If possible, please prepare your Learning Agreement (for ERASMUS students only) after the new course list has been published.

The online course list is published in mid-July for the winter semester and in mid-February for the summer semester.

The online course catalogue (PORTA) can be found in the course catalogue at www.porta-system.uni-trier.de

A list of the ECTS coordinators for the individual departments can be found [here](#). They can help you with your course choice !

Module descriptions can be found at www.porta-system.uni-trier.de under the „Show module descriptions“ section

Choosing and registering for your courses

Please make sure to meet the recommended German language level (B1 German) or that English-taught courses are offered for the subject(s) you are going to study at Trier University! Please note that the vast majority of courses is offered in German only!

For this reason, please check the availability of courses in English at the department(s) of your choice early on. If necessary, contact the departmental coordinators (also called ECTS coordinators) for advice.

Certificates and ECTS-transcripts

The transcript of records (ToR) will be issued after the end of your stay. One transcript is issued per department (if you choose courses from several departments, you will receive several transcripts).



How to find courses on Porta (course catalogue)

Porta is the management system of the University of Trier. Through Porta students can find and register for courses. Students do not need to be enrolled at the University of Trier to look up courses (to prepare course lists and Learning Agreements). This means that you do not need to log in (or register in Porta yourself)!

Click here for a guideline how to find courses on Porta.

How to sign up for courses

Once students are enrolled (shortly before or upon arrival at the University of Trier) and - in case of Erasmus students — their Learning Agreement is approved, they can sign up for courses. The login details for Porta will be sent by email once enrolment is confirmed.

Click here for a guideline how to sign up for courses on Porta.

How to use Stud.IP

The University of Trier uses Stud.IP to organise courses and lectures. On Stud.IP students can view their courses and find information about them. For example, students can download required materials and find literature.

For a detailed guide on how to use Stud.IP click **here**.

ECTS Coordinators

Each faculty is divided into multiple departments with ECTS-Coordinators. These coordinators can support you to select courses and give you course information. Some departments offer specific information for incoming exchange students (click on „[Information](#)“)

ECTS-Coordinators:

Faculty I

Educational Sciences: [Dr. Julia Langhof](#) | julia.langhof@uni-trier.de | +49 (0)651 201-1812 | Room DM 411

Pedagogy: [Dr. Philipp Annen](#) | annen@uni-trier.de | +49 (0)651 201-2352 | Room DM 037 | [Information](#)

Nursing Science: [Prof. Dr. Ana N. Tibubos](#) | tibubos@uni-trier.de | +49 (0)651 201-1914 | Room W 1304.17

Philosophy: [Prof. Dr. Kristina Engelhard](#) | engelhard@uni-trier.de | +49 (0)651 201-2341 | Room B 411 | [Information](#)

Psychology: [Dr. Bernadette von Dawans](#) | erasmuspsy@uni-trier.de | +49 (0)651 201-3743 | Room W 2403.30 | [Information](#)

Faculty II

English Studies: [Paola Sagastuy](#) | erasmusagl@uni-trier.de | 0651-201 2281 | Room B 340 | [Information](#)

Computer Linguistics & Digital Humanities: [Ariadne Ba-resch](#) | baresch@uni-trier.de | +49 (0)651 201-3375 | Room DM 319

German as a foreign language: : [Zita van Wylick](#) | vanwylick@uni-trier.de | +49 (0)651 201-3039 | Room B 333DaZ/DaF: [Prof. Dr. Anke Wegner](#) | wegner@uni-trier.de | +49 (0)651 201-3148 | Room A 313 | [Information](#)

4 Studying at Trier University

German Studies: [Dr. Fausto Ravida](#) | ravida@uni-trier.de | +49 (0)651 201-2331 | Room A 432 | [Information](#)

Japanese Studies: [Prof. Dr. Andreas Regelsberger](#) | regelsb@uni-trier.de | +49 (0)651 201-2289 | Room B 114 | [Information](#)

Yiddish Studies: NN

Classical Philology: [Dr. Johannes Schwind](#) | schwind@uni-trier.de | +49 (0)651 201-2359 | Room B 432

Media Studies: [Dr. Christof Barth](#) | christof.barth@uni-trier.de | +49 (0)651 201-3609 | Room A 320

Romance Studies: [Dr. Hanna Merk](#) | merk@uni-trier.de | +49 (0)651 201-3649 | Room B 217 | [Information](#)

Chinese Studies: [Dr. Jan Goldenstein M.A.](#) | goldenst@uni-trier.de | +49 (0)651 201-3208 | Room A 350

Slavic Studies: [Univ.-Prof. Dr. Henrieke Stahl](#) | stahl@uni-trier.de | +49 (0)651 201-3241 | Room: DM125

Faculty III

Egyptology: [Prof. Dr. Martina Minas-Nerpel](#) | minas@uni-trier.de | +49 (0)651 201-2443 | Room BZ 35

History: [Dr. Eva Bischoff](#) | bischoff@uni-trier.de | +49 (0)651 201-2178 | Room A 222 | [Information](#)

Classical Archeology: [Prof. Dr. Markus Trunk](#) | trunk@uni-trier.de | +49 (0)651 201-2428 | Room BZ 17

Art History: [Dr. des. Denis Grünemeier](#) | gruenemeier@uni-trier.de | +49 (0)651 201-4481 | Room A 111 Papyrology: NN

Political Science: [Dr. Sascha Werthes](#) | eraspols@uni-trier.de | +49 (0)651 201-2134 | Room A 207d, [Information](#).

Faculty IV

Informatics: [Jun.-Prof. Dr. Philipp Kindermann](#) | kindermann@uni-trier.de | +49 (0)651 201-4564 | Room H 427

Mathematics: [Prof. Dr. Jochen Wengenroth](#) | wegenroth@uni-trier.de | +49 (0)651 201-3499 | Room E 211

Sociology, Business Administration, Economics: [Yannick Loeppke](#) | erasfb4@uni-trier.de | +49 651 201-2680 | Room C 330 | [Information](#)

Business Informatics: [Prof. Dr. Ralph Bergmann](#) | bergmann@uni-trier.de | +49 (0)651 201-3876 | Room H 319

Faculty V

Law: [Marion Huck](#) | erasmusfb5@uni-trier.de | +49 (0)651 201-2527 | Room C 17 | [Information](#)

Faculty VI:

Geography / Geosciences: Dr. Achim Röder, Tel.: 0651 201-4606, Room F32, erasmus6@uni-trier.de [Information](#)



4 Studying at Trier University

ECTS Points and the departments

Each department awards different amounts of ECTS credits for their courses. You can find a list of the credits *usually* awarded by the departments below. For departments where credits are not listed, you will need to contact the coordinator for information. Usually in these departments you need to discuss the number of credits with the lectures (depending on the workload of each course).

Faculty I

Education: Dr. Julia Langhof, julia.langhof@uni-trier.de

Pedagogy:

- 2 ECTS points for active participation in courses and lectures
- 5 ECTS points for participation and following exam
- Individual cases: additional services up to 5 ECTS points

Nursing Sciences: Prof. Dr. Ana N. Tibubos tibubos@uni-trier.de

Philosophy:

- 1 ECTS point for lectures
- Seminars (both on undergraduate and graduate level): Attendance: 3 ECTS points; Attendance + Exam: 6 ECTS points

Psychology:

- For B. Sc. Students click [here](#)
- For M. Sc. Students click [here](#)

Faculty II

English Studies: Ms. Paola Rodriguez Sagastuy eras-musangl@uni-trier.de and check the Department of English Studies [here](#).

German language courses: Zita van Wylick, vanwylick@uni-trier.de

Computational Linguistics: NN

Digital Humanities: Ms Elodie Ripoll ripoll@uni-trier.de

DaZ/DaF: Prof. Dr. Anke Wegner wegner@uni-trier.de

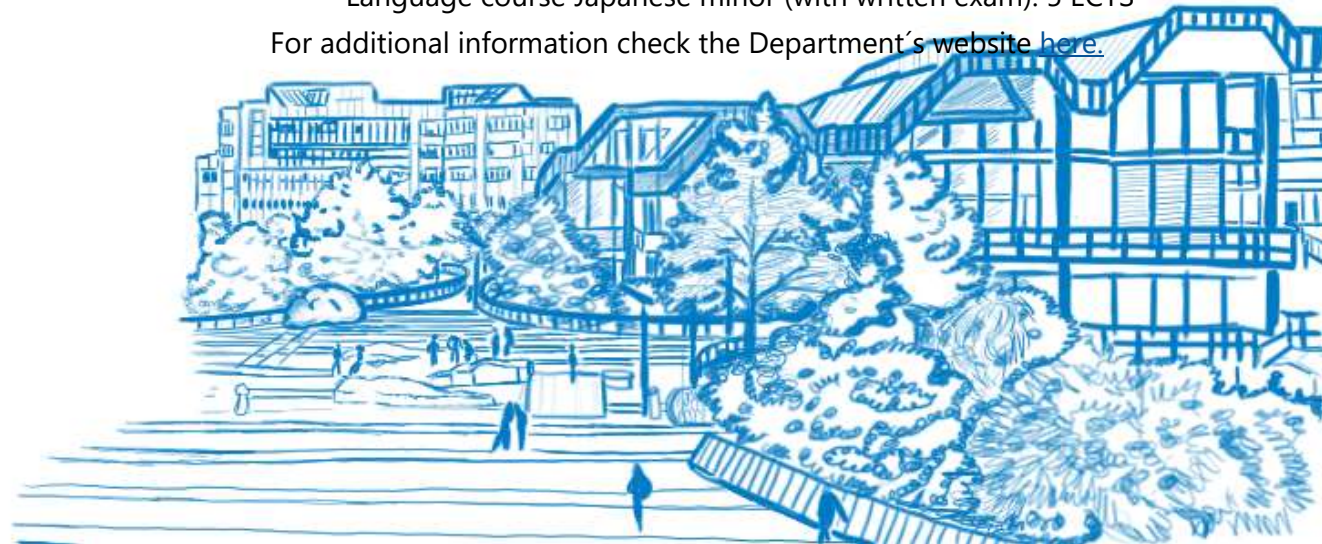
German Studies:

- B.A. Students: 3 ECTS points for passing an ungraded oral exam or 5 ECTS points for passing a graded oral exam at the end of the semester.
- M.A. Students: 5 ECTS points for passing an ungraded oral exam or 7,5 ECTS points for passing a graded oral exam at the end of the semester.

Japanese Studies:

- Lecture: 3 ECTS (with essay), 5 ECTS (written exam or oral exam).
- Exercise: 3 ECTS (active participation), 5 ECTS (written or oral exam)
- Seminar 5 ECTS (with presentation or final test), 7 ECTS (with presentation/test + seminar paper, e.g. term paper)
- Language course Japanese major (with written exam): 10 ECTS
Language course Japanese minor (with written exam): 5 ECTS

For additional information check the Department's website [here](#).



4 Studying at Trier University

ECTS Points and the departments

Yiddish Studies: N/A

Classical Philology: Dr. Johannes Schwind schwind@uni-trier.de

Media Science: Dr. Christopf Barth christof.barth@uni-trier.de

Romance Studies: Dr. Hanna Merk akrom@uni-trier.de check the Department of Romance Studies [here](#).

Sinology: Dr. Jan Goldenstein goldenst@uni-trier.de

Slavic Studies: Prof. Dr. Alexander Bierich bierich@uni-trier.de

Faculty III

Egyptology: Prof. Dr. Martina Minas-Nerpel minas@uni-trier.de

History: Dr. Eva Bischoff bischoff@uni-trier.de

Classical Archaeology: Prof. Dr. Markus Trunk trunk@uni-trier.de

Art History: Dr. des. Denis Grünemeier gruenemeier@uni-trier.de

Papyrology: N/A

Political science:

- Lectures (2 hrs/week) 5ECTS (oral or written exam is taken in addition to participation). A tutorial accompanies some lectures.
- Seminars in basic modules (2 hrs/week): 5 ECTS (usually a presentation and a term paper)
- Seminars in advanced modules (Bachelor) and specialization modules (Master), (4hrs/week): 10 ECTS. (presentation and term paper)

Contact: eraspols@uni-trier.de

Faculty IV

Computer Science: Jun.– Prof. Dr. Phillip Kindermann kindermann@uni-trier.de

Mathematics: Prof. Dr. Jochen Wegenroth wegenroth@uni-trier.de

Sociology, Business Administration and Economics: Detailed course lists available [here](#). Contact: Mr Yannick Loeppke erasfb4@uni-trier.de

Business Informatics: Prof. Dr. Ralph Bergmann bergmann@uni-trier.de

Faculty V

Law: Ms. Marion Huck huckm@uni-trier.de check the website [here](#).

Faculty VI:

Geography/Geosciences: Prof. Achim Röder erasmus6@uni-trier.de and check the website [here](#).



4.5. German as a Foreign Language courses

The language centre of Trier University offers up to 10 different German as a foreign language courses every semester. Courses are for free.

These courses are designed for different language levels and cover a variety of subject areas.

They range from intensive courses for students with little knowledge of German (beginner level A1, A2, "Anfängerstufe"), to intermediate courses (B1, B2, "Mittelstufe") and there are also specialised courses for students with advanced knowledge of German (C1, C2, "Oberstufe").

Every semester, you may take up to three language courses, depending on your knowledge of German. When applying for language courses, you can submit your preferences to the language centre.

However, it is your placement test result that ultimately decides which courses you may take. The placement test takes place during the orientation programme.

An information session during the orientation will be offered.

Exchange students, who cannot or do not want to attend the orientation programme, must contact the language centre in order to make provisions for their admission to language courses.

4.6 Extra-curricular student activities

Cultural activities at the university

Outside of your studies you will have the opportunity to take advantage of a wide range of cultural activities.

CineAStA: a lively and varied film programme by students, for students. It includes original versions with subtitles, experimental and mainstream films as well as the classics. This takes place on Tuesdays and Wednesdays during the lecture period.

The **Collegium Musicum** consists of the university orchestra and the university choir. Both welcome new players/singers, regardless of instrument or voice type.

University sport (uniSport)

So that you don't miss out on physical exercise, the University's Sport Federation offers students a wide range of sports possibilities each semester.

To participate in courses, you will have to buy a "Unisport Ticket at one of the TUKAN machines on campus (starting from 10 Euros per semester). Courses are available both as stream and in-person. Regulations are subject to change depending on the situation of the pandemic.

Whether you enjoy going to the gym, going to a Zumba course or playing rugby or badminton, there are many possibilities both indoor and outdoor for you to explore.

More information: [Sports programmem by uniSport \(in German\)](#)

Available courses include e.g.:

- ▶ Badminton
- ▶ Yoga
- ▶ Basketball
- ▶ Football
- ▶ Running
- ▶ Dancing
- ▶ General fitness
- ▶ Fight Aerobic



The International Centre (iZ)

The iZ is a student association that offers international students a varied and intercultural mentoring programme each semester, as well as advice and guidance. The iZ is not only there to help with all aspects of your studies, but also organizes

international country-themed evenings, relaxed language practice evenings and language tandems. Furthermore, the extensive programme is rounded off by several day excursions and one short-break excursion per semester to a variety of German and European destinations.

▶ www.iz-trier.de

Additional services offered by the iZ:

▶ **1. Connect!** (connect@iz-trier.de)

Kulturbuddy: International students are paired with a person living in Trier and get to experience Trier and its culture together.

Fremde werden Freunde - Make friends in Trier: International students are given the opportunity to meet with people from Trier to take part in a range of activities, from going to excursions, celebrating public holidays and experiencing typical German everyday life.

Beyond Borders: A project to help people seeking asylum with their life in Trier.



► 2. Speak! (speak@iz-trier.de)

Sprachkurse (Language Courses): Language Courses with native speakers.

Sprachabend (Language Evening): Practice together with native speakers of various languages.

Proofreading: assistance with academic texts (answering specific questions about the university standards of scientific work, helping with formulations, corrections)

► 3. Explore! (explore@iz-trier.de)

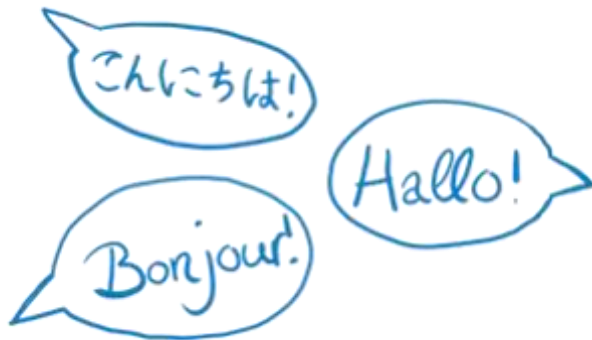
Excursions

Hiking trips

Sport events

► 4. Meet & Greet! (meet-greet@iz-trier.de)

Café International: Come together for a cup of coffee and talk with other students.



Living in Trier



5 Living in Trier

5.1 The city of Trier

The city of **Trier**, founded around 16 B.C. by the Romans as “Augusta Treverorum”, looks back on a history of over 2.000 years and thus counts as the **oldest German city**.

Its long history can be seen and experienced first-hand, particularly thanks to the many architecturally interesting sites still standing since Roman times, the Middle Ages and the Renaissance. A total of eight of these architectural legacies are designated UNESCO sites of world cultural heritage.

The **geographical significance of Trier** can be viewed in a number of ways:

At a local level, Trier is the centre of one of the most famous and well-established wine growing regions in Germany. Seen nationally, Trier lies on the outskirts of Germany, in the most south-western corner and quite remote from the metropolises that are Berlin, Hamburg or Munich. Internationally, however, Trier is in the centre of Europe, in direct proximity to Luxembourg, France and Belgium.

Trier's long history, its significance as centre of the Moselle wine-growing region and its proximity to its European neighbours all make the city a popular tourist destination for visitors from all over the world.

With around 110,000 inhabitants, Trier is quite a small city so it does not take long to get to know your way around. The city centre has plenty of shopping centres, sports facilities, public amenities and civil authority offices, which are all within a short distance from each other.

What is Trier like? Things to know about Germany's oldest city

Trier with all its historic and multiple UNESCO World Heritage sights has a lot to offer culturally as well as historically. Besides those, **Trier is a town full of life** with many small shops, cafés and bars.

Roughly 20% of the cities population is made up of students, which has also shaped Triers cultural scene. Whether you want to join an interesting workshop at the ► [Tuchfabrik](#), drinking some local “Viez” (apple wine) at a bar or visiting the remains of old roman history, there is a lot to do and discover after university.

Only an one-hour-ride away lies Luxembourg city, the capital of Luxembourg, which also has a lot to offer. It is a city with a beautiful old town, many specialty stores, museums and restaurants.



For more information:

Tourist-Information Trier
An der Porta Nigra
54290 Trier
► www.trier.de/tourismus

5 Living in Trier

5.2 Leisure time

Below is a list of some cultural activities that are offered outside of the university:

Culture:

Rheinisches Landesmuseum

Weimarer Allee 1

54290 Trier

www.landmuseum-trier.de

Stadtmuseum Simeonstift

next to the "Porta Nigra"

54290 Trier

www.museum-trier.de

Theater Trier

Am Augustinerhof 3

54290 Trier

www.theater-trier.de

Tuchfabrik e.V. (TuFa)

Weberbach/ Wechselstraße 4

54290 Trier

www.tufa-trier.de

Cinemas:

Broadway

Paulinstraße 18

54292 Trier

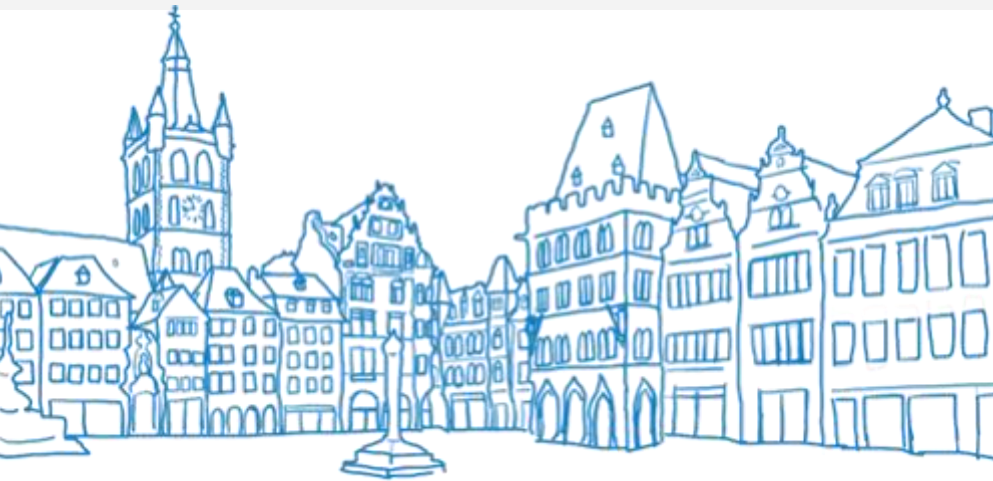
www.broadway-trier.de

Cinemaxx

Moselstraße 17

54290 Trier

www.cinemaxx.de



Trier has, despite its modest size, many pubs, cafes, restaurants, clubs and discos on offer to suit every taste.

More information can be found by visiting

▶ www.hunderttausend.de

▶ www.trier-info.de

or the online magazines "[Lifestyle](#)", where many events, businesses and bars are advertised.

5.3 Important addresses and telephone numbers

City Hall/ Citizens & Resident Registration Office

Viehmarktplatz 20
54290 Trier
Tel.: +49| 115

Immigration Office

Thyrusstraße 17-19
54292 Trier
Tel.: +49| 0651| 718-0

Post office (near the University)

Im Treff 25
54292 Trier

Lost property office

Viehmarktplatz 20
54290 Trier
Tel.: +49 | 651 | 718 4157

Health Office

Paulinstraße 60
54292 Trier

Emergency telephone numbers

Police: 110
Fire Brigade/Ambulance: 112

Central Medical Service

Tel.: (+49) 116 117
Wednesday 14-22 h
Friday 16-22 h
Saturday / Sunday / public holiday 9-22 h
(free of charge from all pay phones, German mobiles and landlines).

Hospitals

"Barmherzige Brüder" Hospital
Nordallee 1
54292 Trier
Tel.: +49 651 208 0

Klinikum Mutterhaus der
Borromäerinnen
Feldstraße 16
54290 Trier
Tel.: +49 651 947 0



6. GLOSSARY – Important terms in German

Accommodation application form = Auftrag zur Vermittlung einer Unterkunft

Admission letter = Zulassungsbescheid

Admissions Office = Studierendensekretariat

Application for admission to study = Antrag auf Zulassung zum Studium

Course certificate = Schein

European Health Insurance Card = Europäische Krankenversicherungskarte

Federal Foreign Office = Auswärtiges Amt

Graded certificate = benoteter Schein

Health Office = Gesundheitsamt

Immigration Office = Amt für Ausländerangelegenheiten

Lecture = Vorlesung

Library = Bibliothek (Bib)

Main station = Hauptbahnhof

Orientation programmeme = Einführungsseminar

Residence permit = Aufenthaltserlaubnis

Residents' Registration Office = Einwohnermeldeamt

Student hall of residence = Studentenwohnheim (short: SWH)

Student Services at Trier University = Studierendenwerk Trier

TUNIKA = your student ID-Card, which you receive after enrolling, has a variety of functions, like validation or as a payment option. It also serves as a ticket for using public transportation in Trier and on other valid routes outside of it (see page 27)

Tutorial = Übung

Ungraded certificate = Teilnahmeschein

University canteen = Mensa

University Sport Federation = Allgemeiner Hochschulsport



6. GLOSSARY – Important links

Important contact points:

Federal Foreign Office (Auswärtiges Amt): <https://www.auswaertiges-amt.de/en>

German Embassies: <https://www.auswaertiges-amt.de/de/ReiseUndSicherheit/deutsche-auslandsvertretungen/03-webseitenav>

Information on Entering Germany and Visa: <https://www.uni-trier.de/en/international/vor-der-einreise-allgemeine-infos/entering-germany-and-visa>

Information on Funding: <https://www.uni-trier.de/en/studies/during-your-studies/organising-your-finances>

Proof of financial resources and blocked account: <https://www.daad.de/en/studying-in-germany/living-in-germany/finances/>

University:

PORTA: <https://www.porta-system.uni-trier.de/qisserver/pages/cs/sys/portal/hisinoneStartPage.faces>

Stud.IP: <https://studip.uni-trier.de/>

Canteen: www.studiwerk.de Library: www.uni-trier.de/bibliothek

Fields of study and subjects: <https://www.uni-trier.de/studium/studienangebot/studienfaecher>

ECTS-Coordinators: <https://www.ects.uni-trier.de>

University Sport (uniSport): <https://www.uni-trier.de/universitaet/wichtige-anlaufstellen/hochschulsport/start-aktuelles>

The International Centre (iZ): <https://www.uni-trier.de/en/international/international-zentrum/welcome>

Transportation:

PORTAZON: https://www.studiwerk.de/eo/cms?_sprache=de&_bereich=artikel&_aktion=detail&idartikel=234716

German train website (Deutsche Bahn): <https://int.bahn.de/en/DB>

Navigator App: <https://www.bahn.de/service/mobile/db-navigator>

Train traffic reports: <https://www.bahn.de/service/fahrplaene/aktuell>

Flixbus: <https://www.flixbus.de/>



7. Important dates winter semester 2025/26

Registration
at Uni Trier

**no later than
June 1**

For winter semester
2025/26

Orientation
programme

**01 Oct. 2025 –
10 Oct. 2025**



Beginning of
lecture period

October 13, 2025

Residents'
Registration Office

**the latest 2 weeks
after moving in**

Re-registration for
summer semester
2026

**no later than
March 15, 2026**



Imprint

Publisher:

Trier University

International Office

D-54286 Trier

Editing: Janina Kroener, Laura Bach, Jenny Medow, Max Obels, Anna Seregin

Photos/Graphics:

pp 5, 55: Internationales Zentrum a. d. Universität Trier e.V.

p 10 (below): Studierendenwerk Trier;

p 10 (up): www.maplo.net

pp 9, 22, 36, 48, 54: Jenny Medow

Year: 04/2025

All rights reserved, information is subject to change. Please send any suggestions to the International Office, Trier University.

www.international.uni-trier.de